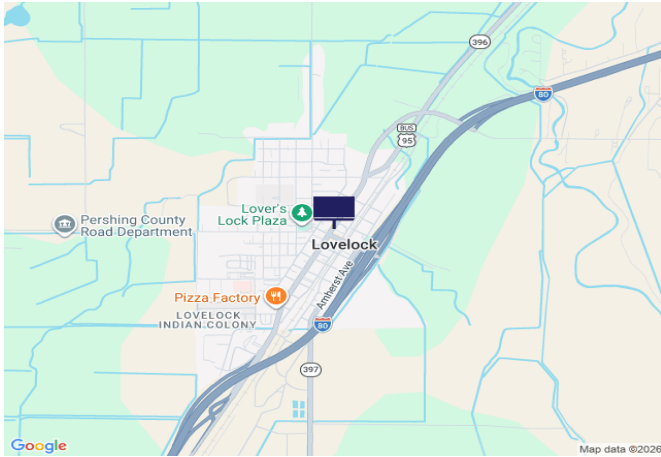
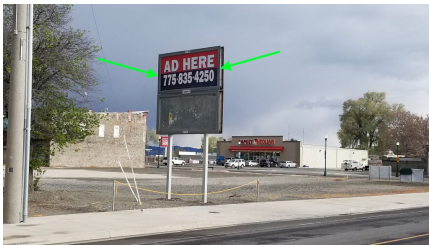




## Cornell Ave (IBR80/SR396), 150' N of Main St (SR398)



**Location Description :** Cornell Avenue (Interstate Business Route 80/State Route 396), 150 feet North of Main Street (State Route 398)  
**Traffic Direction :** Southbound  
**Monthly Viewers :** 39,330  
**Size :** 5' x 11'  
**City:** Lovelock  
**County:** Pershing  
**Zip:** 89419  
**GPS :** 40.180419, -118.474208  
**Mile Post :** N/A  
**Read :** Left  
**Illumination :** No  
**Inventory:** 01146  
**Availability :** Available Now



FOR MORE INFORMATION CONTACT ROBERT KENNERSON, SALES AGENT  
**(775) 835-3825**  
Additional Locations Available