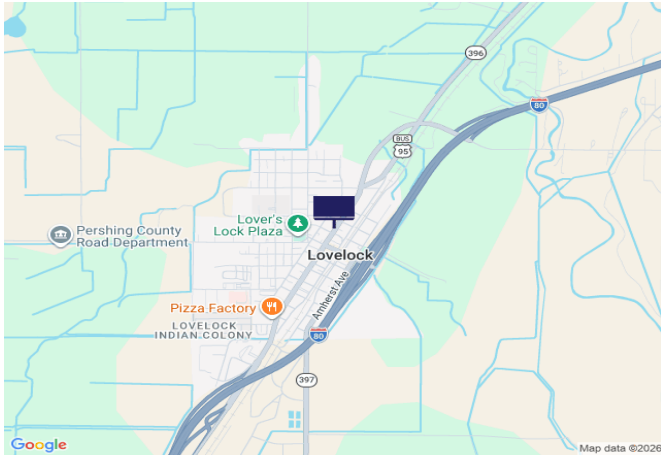




Cornell Ave (IBR80/SR396), 1300' S of Upper Valley Rd (USB95/SR396)



Location Description : Cornell Avenue (Interstate Business Route 80/State Route 396), 1300 feet South of Upper Valley Road (U.S. Business Route 95/State Route 396)

Traffic Direction : Northbound

Monthly Viewers : 26,910

Size : 5' x 11'

City: Lovelock

County: Pershing

Zip: 89419

GPS : 40.181328, -118.473895

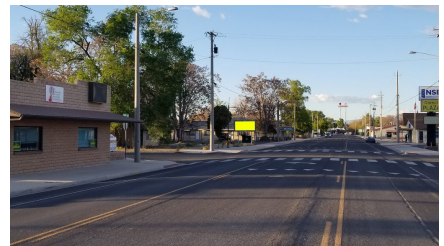
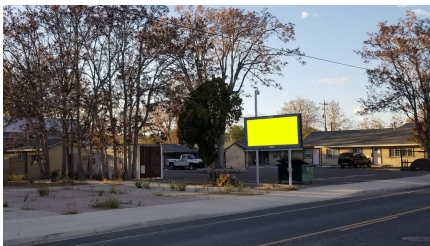
Mile Post : N/A

Read : Left

Illumination : No

Inventory: 01133

Availability : Available Now



FOR MORE INFORMATION CONTACT ROBERT KENNERSON, SALES AGENT

(775) 835-3825

Additional Locations Available