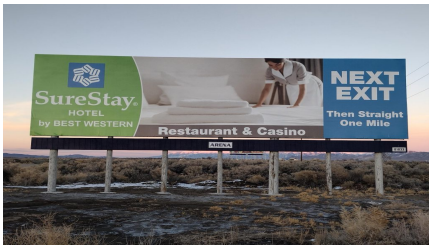




## IR80/US95, 1.6 mi W of W Lovelock Exit 105



**Location Description :** Interstate Route 80/U.S. Route 95, 1.6 miles West of West Lovelock Exit 105  
**Traffic Direction :** Eastbound  
**Monthly Viewers :** 144,900  
**Size :** 14' x 48'  
**City:** Lovelock  
**County:** Pershing  
**Zip:** 89419  
**GPS :** 40.141512, -118.504111  
**Mile Post :** 103.0  
**Read :** Left  
**Illumination :** No  
**Inventory:** 01033  
**Availability :** Occupied



FOR MORE INFORMATION CONTACT ROBERT KENNERSON, SALES AGENT

(775) 835-3825

Additional Locations Available