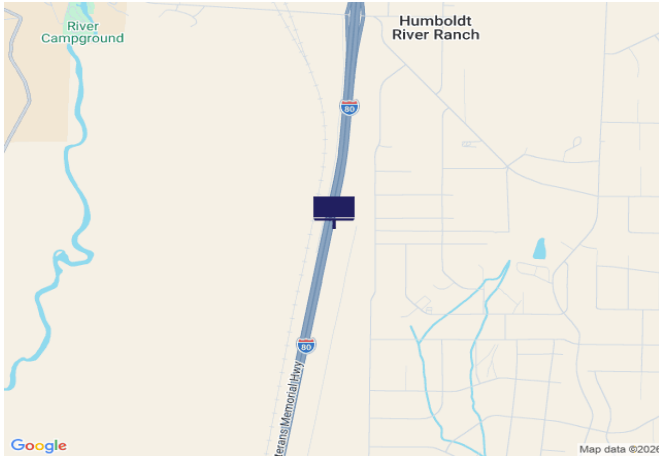




IR80/US95, 1.1 mi S of Rye Patch Reservoir Rd



Location Description : Interstate Route 80/U.S. Route 95, 1.1 miles South of Rye Patch Reservoir Road

Traffic Direction : Eastbound

Monthly Viewers : 200,790

Size : 14' x 48'

City: Rye Patch

County: Pershing

Zip: 89419

GPS : 40.450915, -118.286802

Mile Post : 128.1

Read : Right

Illumination : Yes

Inventory : 01047

Availability : Occupied



FOR MORE INFORMATION CONTACT ROBERT KENNERSON, SALES AGENT

(775) 835-3825

Additional Locations Available